

Drag and

Drop

Class - 3

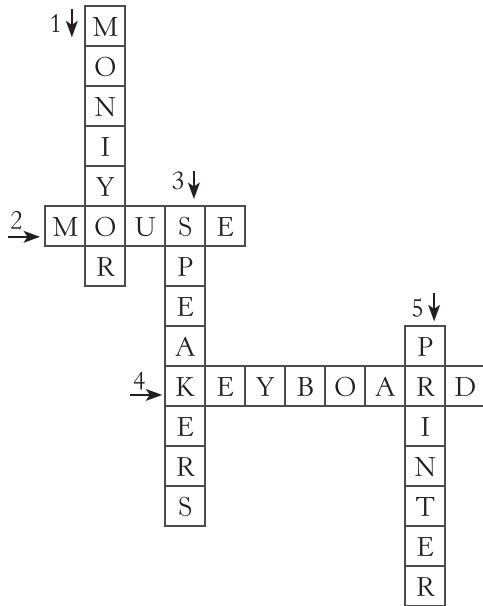
Output devices: speakers, printer, plotter, monitor

Rapid Fire

1. A hard copy is a printed output of information from a computer.
2. A microphone is used to input voice and other sounds into the computer.
3. The CPU controls all the operations done on a computer.
4. The main circuit board of a computer is motherboard.

Brain Teaser

The complete crossword puzzle is given alongside.



Let's Review

- A. Tick (✓) the correct option.
1. (a) 2. (b) 3. (b)
 4. (a) 5. (b)
- B. Write True or False for the following statements.
1. False 2. True 3. True
 4. False 5. True
- C. Fill in the blanks by using the following words.
1. A light pen is a/an **pointing** device.
 2. The monitor is the main **output** device.
 3. Input devices are special type of **hardware**.
 4. The motherboard is attached **inside** the CPU case.

5. A computer system consists of both hardware and **software**.
- D. Answer the following questions.
1. A part of a computer that we can touch is called the hardware.
 2. The motherboard is the main circuit board on a computer that enables programs to run the computer.
 3. A trackball is an input device with a ball at the top. It looks and works like a mouse.
 4. The full form of DVD is Digital Versatile Disk.
 5. The six hardware are: the mouse, keyboard, monitor, CPU, motherboard and hard disk.
- E. Match the names with their pictures correctly.
1. (d) 2. (e) 3. (b)
 4. (a) 5. (c)

Chapter 3 : Computer Software

Activity Time

The students will do it themselves.

Rapid Fire

1. There are two types of software.
2. A hardware cannot work by itself. It needs step-wise instructions to perform any task. Thus, a hardware cannot work without a software.

Brain Teaser

Four application software are encircled in the below grid.

W	O	R	D	P	A	D	V	M
C	X	P	T	A	U	S	C	S
D	Z	D	U	I	R	E	R	W
P	O	B	D	N	E	U	A	O
E	P	M	O	T	F	D	M	R
A	D	N	T	E	M	U	P	D
C	E	F	H	D	T	D	T	P
M	S	E	X	C	E	L	V	R

Let's Review

- A. Tick (✓) the correct option.
1. (b) 2. (a) 3. (c)
 4. (b) 5. (d)

- B. Fill in the blanks by using the following words.
- Utilities are the programs that manage system **resources**.
 - MS PowerPoint is a **presentation** program.
 - A program is a set of **instructions** used to perform a task on computer.
 - Software can be seen but cannot be **touched**.
 - System software controls all the **internal** operations of a computer.

C. Write True or False for following statements.

- False
- True
- True
- True
- False

D. Match the following software programs with their functions.

- (b)
- (e)
- (a)
- (c)
- (d)

E. Answer the following questions.

- A software is a set of programs and other operating information used by a computer.
- The system software manages and controls all the internal operations of a computer.
- An operating system is a set of programs that manages all the hardware and software resources and enables a computer to run programs on it.

Examples: Linux and Windows 10

- A language translator is a programming language processor that converts a computer program from one language to another, usually in machine language. The main types of language translators are: assemblers, interpreters and compilers.
- An application software is a computer program designed to carry out specific tasks to be used by end-users. Examples: Paint and MS Excel
- Four application software are: WordPad, Paint, MS Word and MS PowerPoint.

Activity Time

Application software are: Windows Media Player; Paint; MS Word

Model Test Paper — I

A. Tick (✓) the correct option.

- (b)
- (d)
- (a)
- (c)
- (c)
- (d)
- (c)
- (b)
- (a)

B. Answer the following questions.

- The three features of a computer are:
 - It works very fast with accuracy.
 - It can store a large amount of data.
 - It can work for many hours without getting tired.
- Mark-I was the first digital computer, which worked electro-mechanically for calculations.
- The Memory Unit stores data and instructions temporarily on which CPU works.
- A light pen is a pen-shaped pointing computer input device which is used on a special pad.
- System software is a type of computer program that controls the overall functioning of computer.
- Microsoft Access is an application software that we can use to store, edit, and organize large data.
- Windows Media Player is a popular media player program from Windows which is used for playing and organizing audio and video files, i.e., to listen to songs and watch movies.
- An application software is a computer program designed to carry out specific tasks to be used by end-users.

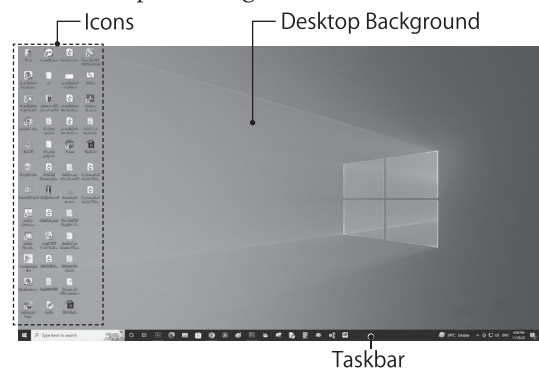
C. Match the following.

- (c)
- (e)
- (a)
- (d)
- (b)

Chapter 4 : Windows 10 – An Operating System

Activity Time

The labelled picture is given below.

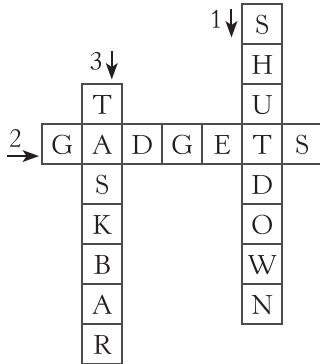


Rapid Fire

1. The Task bar contains a Start Button, Opened Programs and Notification Area.
2. The latest version of Windows is Windows 11, which developed after this book had written and revised.

Brain Teaser

The complete word puzzle is given below.



Let's Review

- A. Tick (3) the correct option.
1. (c)
 2. (a)
 3. (c)
 4. (b)
 5. (d)
- B. Fill in the blanks by using the following words.
1. **Windows 10** is an operating system developed by Microsoft Corporation.
 2. **Start** button opens a list of all the programs installed on your computer.
 3. **Shut Down** exits Windows and turns off the computer.
 4. **Sort the Icons** means arranging the Icons on the desktop.
 5. **Task bar** is located at the bottom of the screen.
- C. Answer the following questions.
1. An operating system is a software that controls and manages different parts of a computer system. It acts as an interface between the computer parts.
 2. The three features of the operating system are:
 - It manages different parts, such as the CPU, memory, disk drives and printers, of a computer system.

- It controls different parts of the computer system, providing services for application software
 - It establish an interface between different parts of the computer.
3. The background picture of Windows 10 desktop is called Desktop Background.
 4. The Taskbar is a bar at the bottom of the screen usually shows the programs which are currently running.
 5. Icons are small pictures or symbols on a computer screen that represent different programs, files or folders.
 6. To select an icon, point the mouse pointer over the icon to be selected and click on it. The change in colour of the area around the icon shows that icon is selected.
 7. The steps to sort an icon:
 - Right click on empty area of the desktop. A pop-up menu appears.
 - Point the mouse pointer to Sort by option. A submenu appears.
 - Select one of the given options. Icons get sorted out accordingly.
 8. When we click the Start button, an alphabetical list of all installed programs opens up. This is called Start menu. Three important commands of Start menu are: to start programs, to open files, and to open directories using the default program.

Activity Time



Desktop



Recycle bin



Start button



MS Word doc.



Internet Explorer






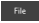

Youtube

Chapter 5 : MS Paint

Brain Teaser

The complete word puzzle is given alongside.

Let's Review

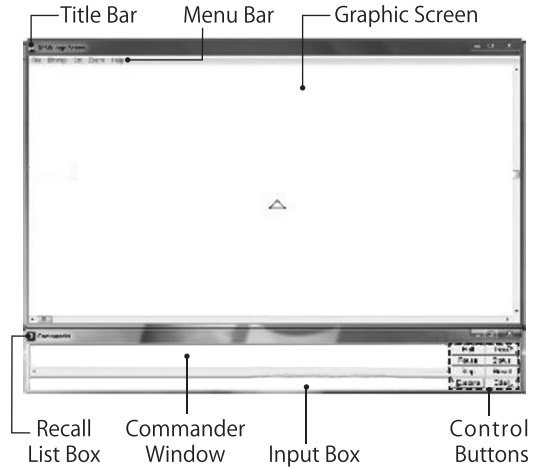
- A. Tick (✓) the correct option.
- (c) 2. (a) 3. (b)
 - (a) 5. (c)
- B. Write True or False for the following statements.
- True 2. False 3. False
 - True 5. True
- C. Match the following.
- Quick Access toolbar

 - Ruler

 - Title bar

 - File button

 - Status bar

- D. Answer the following questions.
- A word processor is an application software that helps the user type text on the computer.
 - Two word processors are: MS Word and WordPad.
 - Three advantages of MS Word are:
 - The user can add pictures in the document to make it more attractive.
 - The user can check spelling mistakes and grammar.
 - The user can change the text look applying different colours, styles and effects.
 - The steps to open MS Word 2016:
 - Click the Start button. A list of different programs appears on the screen.
 - Scroll the mouse and click Word 2016.
 - Click the Blank document option. The Word 2016 opening window will appear.
 - The steps to open MS Word 2016:
 - Click the File button. A list with different options appears on the screen.
 - Click the Save option. The Save As dialog box appears.
 - Type a name for your document in the File name box.

- Click the Save button. Your document will be saved.

Chapter 7 : Introduction to MSW LOGO

Activity Time

The complete LOGO screen with labelled parts is given below.



Rapid Fire

- LEFT or LT command is used to turn the turtle's head to the left direction. It also specifies by how many units the user wants the turtle to turn its head.
- To move the turtle backward, we use Backward or BK command.

Brain Teaser

The names of the Control Buttons are encircled in the word grid.

S	T	E	P	V	T	M	Y
J	R	T	A	S	R	C	E
A	Z	V	U	E	A	K	N
B	A	Y	S	Z	C	C	M
U	V	R	E	S	E	T	P
Z	Q	M	O	T	H	O	N
N	Q	T	F	E	D	A	C
S	X	L	W	N	I	H	O

Let's Review

- A. Tick (✓) the correct option.
- (a) 2. (c) 3. (a)
 - (c) 5. (a)

B. Fill in the blanks by using the following words.

1. A language which the computer understands is known as **computer language**.
2. The white blank area to draw pictures is called **Graphic Screen**.
3. We type our commands in the **input box**.
4. The commands given to turtle are called the **LOGO primitives**.
5. The BK command moves the turtle **backwards**.

C. Write True or False for the following statements.

1. True 2. False 3. True
4. True 5. True

D. Answer the following questions.

1. MSW Logo is a programming language which interprets on the basis of computer language Logo. It helps us write instructions for the computer to make it do certain tasks for us.
2. The four computer languages other than MSW Logo are: C, C++, Java and FORTRAN.
3. The turtle is triangular in shape.
4. LOGO primitives are commands given to the turtle.
5. Three LOGO primitives along with their functions are given below.
 - **Forward:** It is used to move the turtle's head in the forward direction.
 - **Backward:** It used to move the turtle's head in the backward direction.
 - **Right:** It is used to move the turtle's head in the right direction.

Chapter 8 : Introduction to Scratch

Rapid Fire

1. A program is a set of instructions that the user gives to a computer so as to perform a specific task.
2. A programming language is a written language used to write a computer program.

Let's Review

A. Tick (✓) the correct option.

1. (b) 2. (a) 3. (b)
4. (a) 5. (a)

B. Fill in the blanks by using the following words.

1. **Scratch** is one of the easiest computer languages.
2. **Script** is a collection or stack of blocks that all interlock with one another.
3. The Stage is an **area** that represents the background of its project.
4. In Scratch, the Sprite moves on the **Stage** when you run the program.
5. The **Sprite** is used to start the execution in Scratch.

C. Write 'True' or 'False' for the following statements.

1. False 2. True 3. True 4. True

D. Answer the following questions.

1. Scratch is a block-based visual programming language.
2. A Sprite is a graphic image in Scratch. It performs actions on the Stage based on Scripts in a project using blocks.
3. Six parts of Scratch are explained below:

Title Bar: Located at the very top of the screen, it displays the name of the document currently using.

Language icon: It is used to change the language interface.

Stage: It is the area where a Sprite moves and performs various actions according to the instructions given by the user.

Red button: It is used to stop all the executions of the Scratch project. is pressed, the program starts running.

Presentations Mode: It is used to see the program on the full screen.

Blocks palette: It is the area that contains a set of blocks, which are used to program a Sprite and give actions to it.

4. Green Flag is used to start an execution of a Scratch program. When it is pressed, the program starts running.
5. Sounds block is used to play the sound of a Sprite?
6. The Title Bar displays the name of the document currently using.

6. The Title Bar displays the name of the document currently using.
7. Blocks palette contains a set of blocks, which are used to program a Sprite and give actions to it.
8. The ten categories of blocks along with their colours are: Motion, Looks, Sound, Pen, Data, Events, Control, Sensing, Operators, and More Blocks.
 - **Motion blocks:** blue
 - **Looks blocks:** purple
 - **Sound blocks:** magenta
 - **Pen blocks:** green
 - **Data blocks:** red
 - **Events blocks:** Brown
 - **Control blocks:** golden
 - **Sensing blocks:** cyan
 - **Operators blocks:** light green
 - **More blocks:** violet

Chapter 9 : Introduction to Artificial Intelligence

Rapid Fir

1. The ability to learn, understand and apply the knowledge to improve life is called intelligence.

The intelligence demonstrated by machines is known as artificial intelligence.

2. Human has created artificial intelligence in computers.

Rapid Fir

1. A machine does a lot for humans. It works easier and faster than humans, giving more accurate result.
2. A robot is an intelligent machine which looks like a human being. It works like human beings because of artificial intelligence it has.

Let's Review

- A. Tick (✓) the correct option.

1. (c) 2. (c) 3. (c)
4. (d) 5. (b) 6. (c)

- B. Fill in the blanks with the words given below.

1. Machines based on self-awareness will be **super intelligent**.
2. Reactive machines do not share **memories**.

3. Artificial intelligence machines based on the theory of mind understand human **emotions**.
 4. Self-driving machines are an example of **limited theory** artificial intelligence.
- C. Write True or False for the following statements.
1. false 2. true 3. true
 4. true
- D. Answer the following questions.
1. There are four types of artificial intelligence. They are Reactive machines, Limited memory, Theory of mind and Self-awareness.
 2. Humans have created machines to make their work easy and fast with accuracy.
 3. The students will give answer of this question.
 4. We think that self-awareness artificial intelligence is the best. It is because machines based on this type of artificial intelligence will be super intelligent and conscious. They will have the ability to think for themselves, have desires, and understand feelings of others.
 5. Theory of Mind artificial intelligence will work like humans to take decision and express emotions.

Model Test Paper — II

- A. Tick (✓) the correct option.

1. (a) 2. (b) 3. (a)
4. (a) 5. (b) 6. (b)

- B. Answer the following questions.

1. An operating system is a software that controls and manages the different parts of a computer system. It acts as an interface between the computer parts.
2. Two word processors are: WordPad and Open Office Writer.
3. Desktop Background is the image that appears behind the icons on the computer's desktop. Users can change background themselves.
4. LOGO primitives are commands given to the turtle. Two logo primitives are FORWARD and BACKWARD.
5. Two computer languages are C++ and Java.
6. The Color Picker is used to select colour of an object.

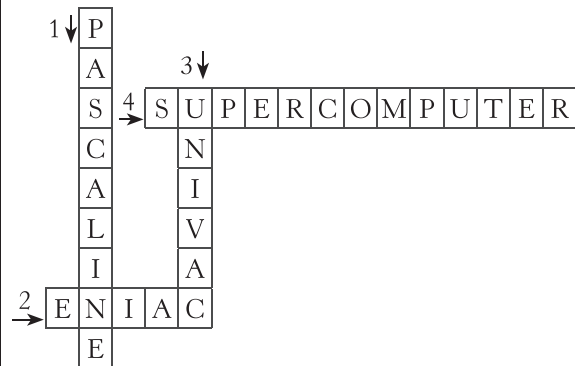
Activity Time

The students will do it themselves.

Name	Invention
Blaise Pascal	Pascaline
Charles Babbage	Analytical Engine
John Napier	Napier's Bones
J. P. Eckert	ENIAC
John Mauchly	UNIVAC-I

Brain Teaser

The complete puzzle is given below.



Rapid Fire

1. Napier's Bones device used the Hindu-Arabic notation of numbers.
2. The main working component of second-generation computers was transistor.
3. Pascaline was the first mechanical calculator.

Let's Review

- A. Tick (✓) the correct option.
 1. (c)
 2. (b)
 3. (b)
 4. (b)
 5. (c)
- B. Match the following.
 1. (c)
 2. (d)
 3. (a)
 4. (e)
 5. (b)
- C. Write True or False for the following statements.
 1. False
 2. True
 3. True
 4. True
 5. False
- D. Answer the following questions.
 1. Napier's Bones was a calculating device invented by a Scottish mathematician named

7. Three types of tools available in Paint are: Text tool, Curve tool and Color Picker.
8. To select an icon, point the mouse pointer over the icon to be selected and click on it. The change in colour of the area around the icon shows that icon is selected.
9. The Repeat block found in the Control category is used to repeat a set of statements (blocks) a number of times as we want.
10. Deep Blue, a reactive machine, was developed to play the chess game against a human. Its aim was to defeat the human.

C. Fill in the blanks.

1. **Application programs** are mini programs that display information and provide access to various useful tools.
2. **Quick Access** bar launches an application quickly.
3. The blinking vertical line in the upper-left corner of the text area is known as the **turtle**.
4. LOGO stands for **Logic Oriented Graphic Oriented**.
5. The **Delete** command is used to delete the selected part of an image.

D. Write True or False for the following statements.

1. True
2. True
3. False
4. True
5. True

E. Match the following.

1. (d)
2. (a)
3. (f)
4. (c)
5. (h)
6. (g)
7. (e)
8. (b)

Cyber Olympiad

Tick (✓) the correct option for each question.

1. (b)
2. (d)
3. (c)
4. (d)
5. (d)
6. (a)
7. (c)
8. (b)
9. (a)
10. (c)
11. (a)
12. (a)
13. (c)
14. (d)
15. (d)
16. (a)
17. (b)
18. (a)
19. (a)
20. (c)
21. (d)
22. (c)
23. (d)
24. (c)
25. (c)
26. (b)
27. (d)
28. (b)
29. (c)
30. (b)